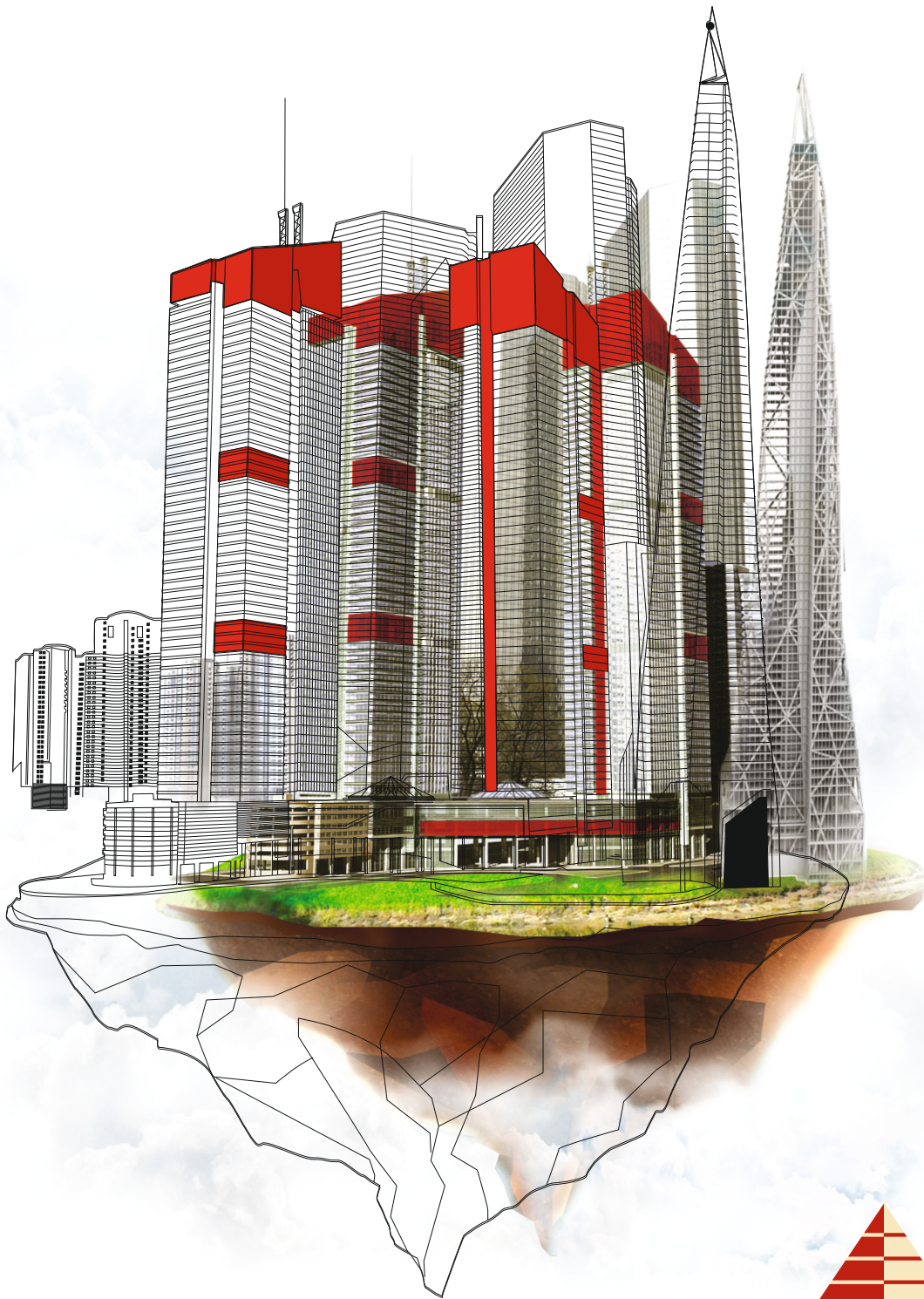

2015/2016

Product Catalog



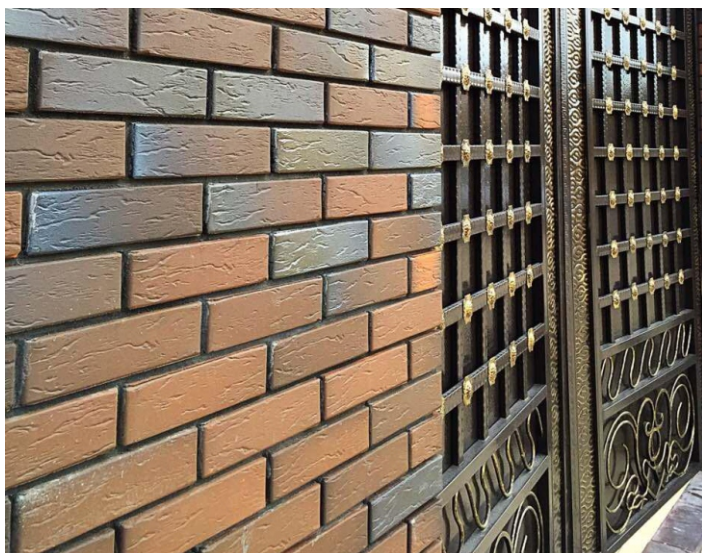
5th ELEMENT Ltd.



Face hollow brick 1 NF, FLASH



- Produced in two colours: red and flash. Face flash shades are created by means of a special sophisticated technology of firing, without any colouring agents, which makes the bricks more environmentally friendly. Available with and without Rusticator.



Technical data

DIMENSION (MM)	250x120x65
WEIGHT (KG)	3.9
DENSITY (KG/M3)	1900-2000
GRADE (M*)	250-300
VOIDAGE (%)	0%
FROST-RESISTANCE (CYCLE)	100
WATER ABSORPTION (%)	6-9
THERMAL CONDUCTIVITY W /(m ° C)	0.558





Face solid brick 1 NF , FLASH



- Used for facing exterior walls of buildings, erecting columns, constructing fireplaces and chimneys. Due to high strength can be used as supporting material alongside with construction brick. Produced in two colors: red and flash, with and without Rustikator.

Technical data

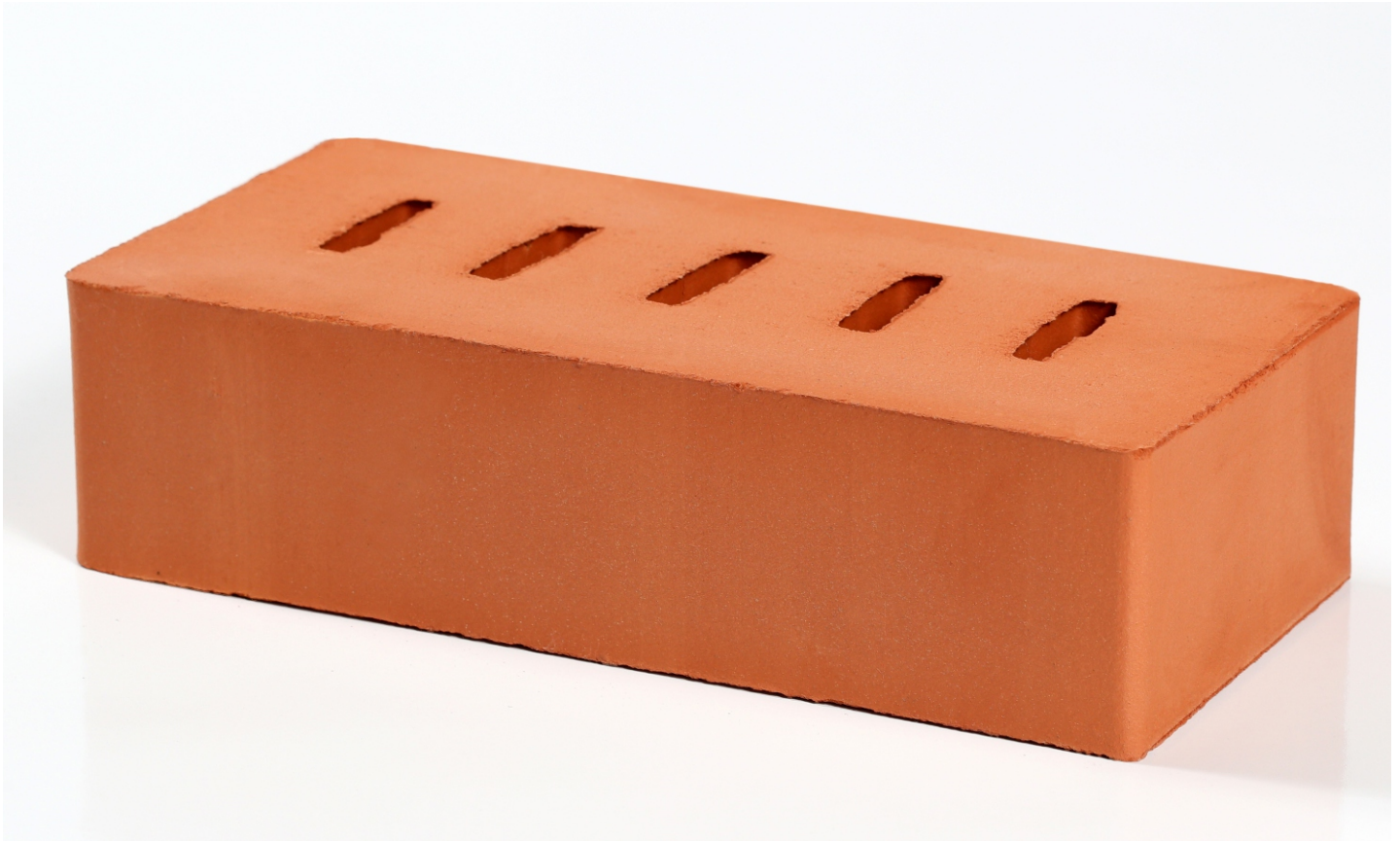
DIMENSION (MM)	250x120x65
WEIGHT (KG)	2.55
DENSITY (KG/M3)	1200-1300
GRADE (M*)	175-250
VOIDAGE (%)	34%
FROST-RESISTANCE (CYCLE)	75-100
WATER ABSORPTION (%)	6-9
THERMAL CONDUCTIVITY W /(m ° C)	0.193





Common brick 1 NF

(conditionally solid)



- Common brick 1 NF (conditionally solid) is intended for constructing load-bearing exterior and interior walls of buildings.

Technical data

DIMENSION (MM)	250x120x65
WEIGHT (KG)	3.5
DENSITY (KG/M3)	1600-1800
GRADE (M*)	150-350
VOIDAGE (%)	13%
FROST-RESISTANCE (CYCLE)	100
WATER ABSORPTION (%)	8.3
THERMAL CONDUCTIVITY W /(m ° C)	0.39





Common solid brick 1 NF



- Common solid brick 1 NF is intended for constructing load-bearing and self-supporting exterior walls of buildings and partition walls. Also used for building basements, chimneys and ducts. Distinguished by high strength.

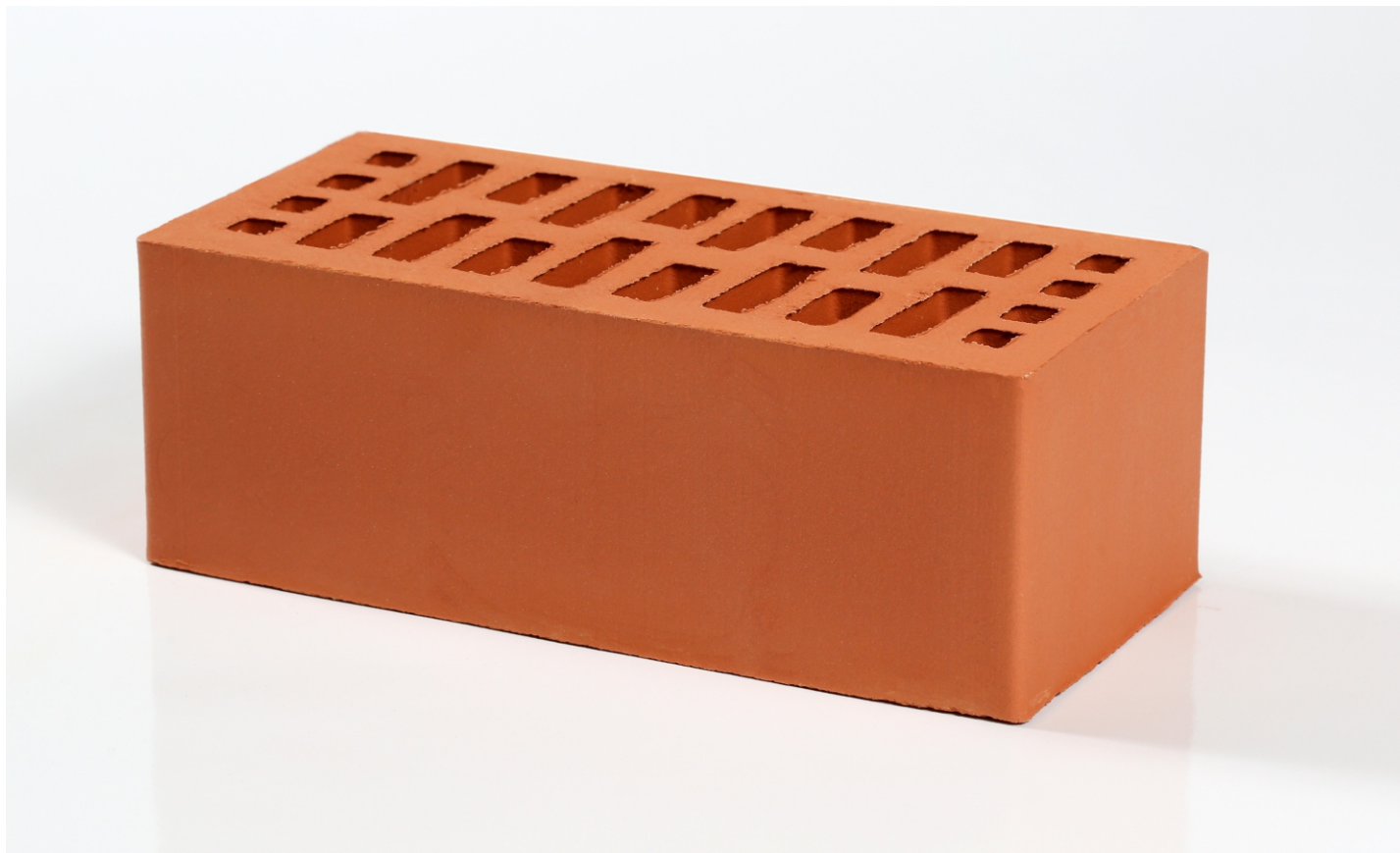
Technical data

DIMENSION (MM)	250x120x65
WEIGHT (KG)	3.9
DENSITY (KG/M3)	1900-2000
GRADE (M*)	200-300
VOIDAGE (%)	0%
FROST-RESISTANCE (CYCLE)	100
WATER ABSORPTION (%)	9.5
THERMAL CONDUCTIVITY W /(m ° C)	0.558





Ceramic hollow thickened brick 1,4 NF



- Ceramic hollow thickened brick 1,4 NF is intended for constructing load-bearing and self-supporting exterior and interior walls of buildings.

Technical data

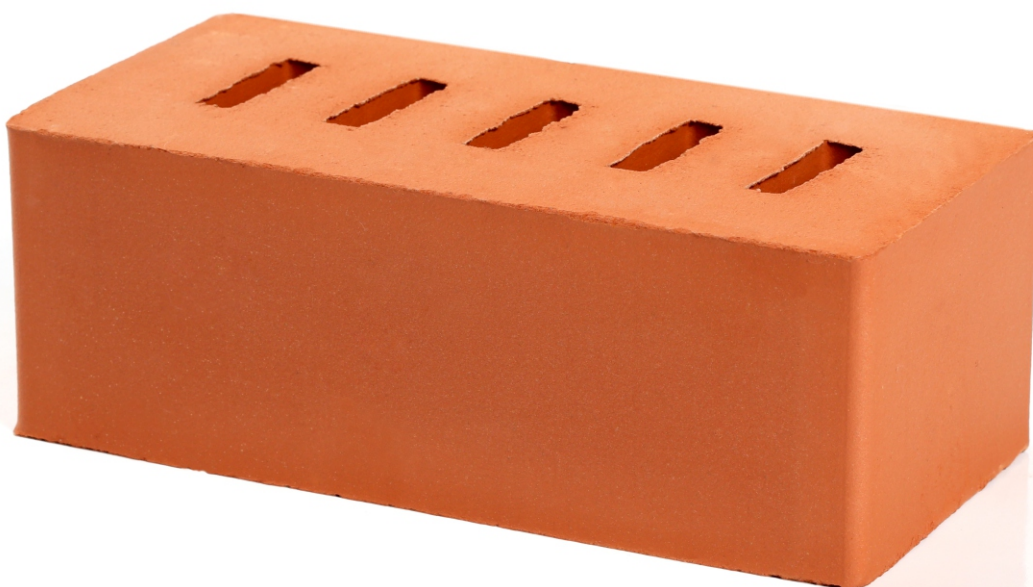
DIMENSION (MM)	250x120x88
WEIGHT (KG)	3-3.15
DENSITY (KG/M3)	1000-1200
GRADE (M*)	100-200
VOIDAGE (%)	42%
FROST-RESISTANCE (CYCLE)	50
WATER ABSORPTION (%)	9.3
THERMAL CONDUCTIVITY W /(m ° C)	0.203





Ceramic thickened brick 1,4 NF

(conditionally solid)



- Ceramic thickened brick 1,4 NF (conditionally solid) is intended for constructing load-bearing exterior and interior walls of buildings.

Technical data

DIMENSION (MM)	250x120x88
WEIGHT (KG)	4.3-4.8
DENSITY (KG/M3)	1600-1700
GRADE (M*)	150-300
VOIDAGE (%)	13%
FROST-RESISTANCE (CYCLE)	50
WATER ABSORPTION (%)	10.3
THERMAL CONDUCTIVITY W /(m ° C)	0.392





Ceramic wall stone, common 2,1 NF (double stone)



- Intended for constructing load-bearing and self-supporting exterior and interior walls of buildings, interior partition walls.



Technical data

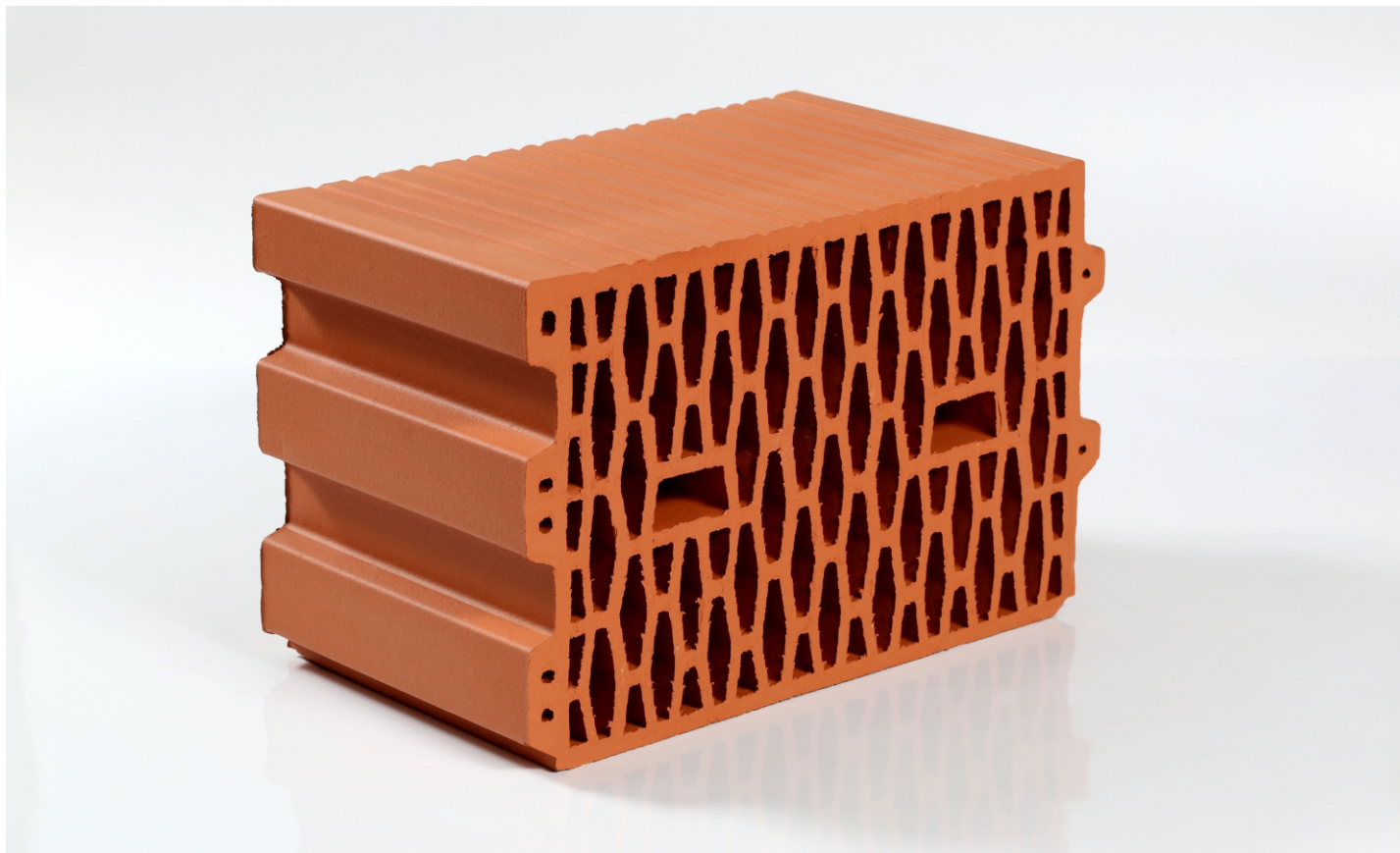
DIMENSION (MM)	250x120x140
WEIGHT (KG)	3.9-4.8
DENSITY (KG/M3)	1000-1200
GRADE (M*)	150-250
VOIDAGE (%)	48%
FROST-RESISTANCE (CYCLE)	75
WATER ABSORPTION (%)	11.5
THERMAL CONDUCTIVITY W /(m ° C)	0.197



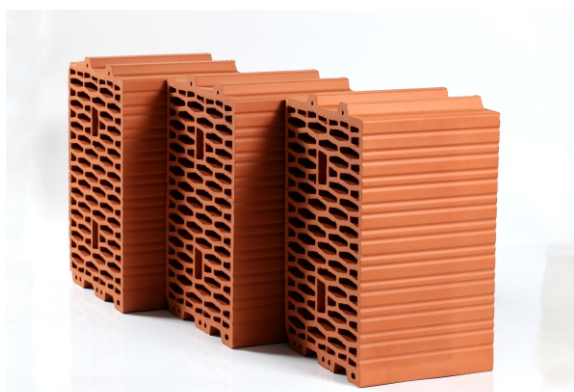


Large-format ceramic stone

10,7 NF-L



- Intended for constructing load-bearing and self-supporting walls of cottages and high-rise buildings. It is reasonable to use the block both in brick and monolithic construction instead of common ceramic brick or blocks of porous concrete.



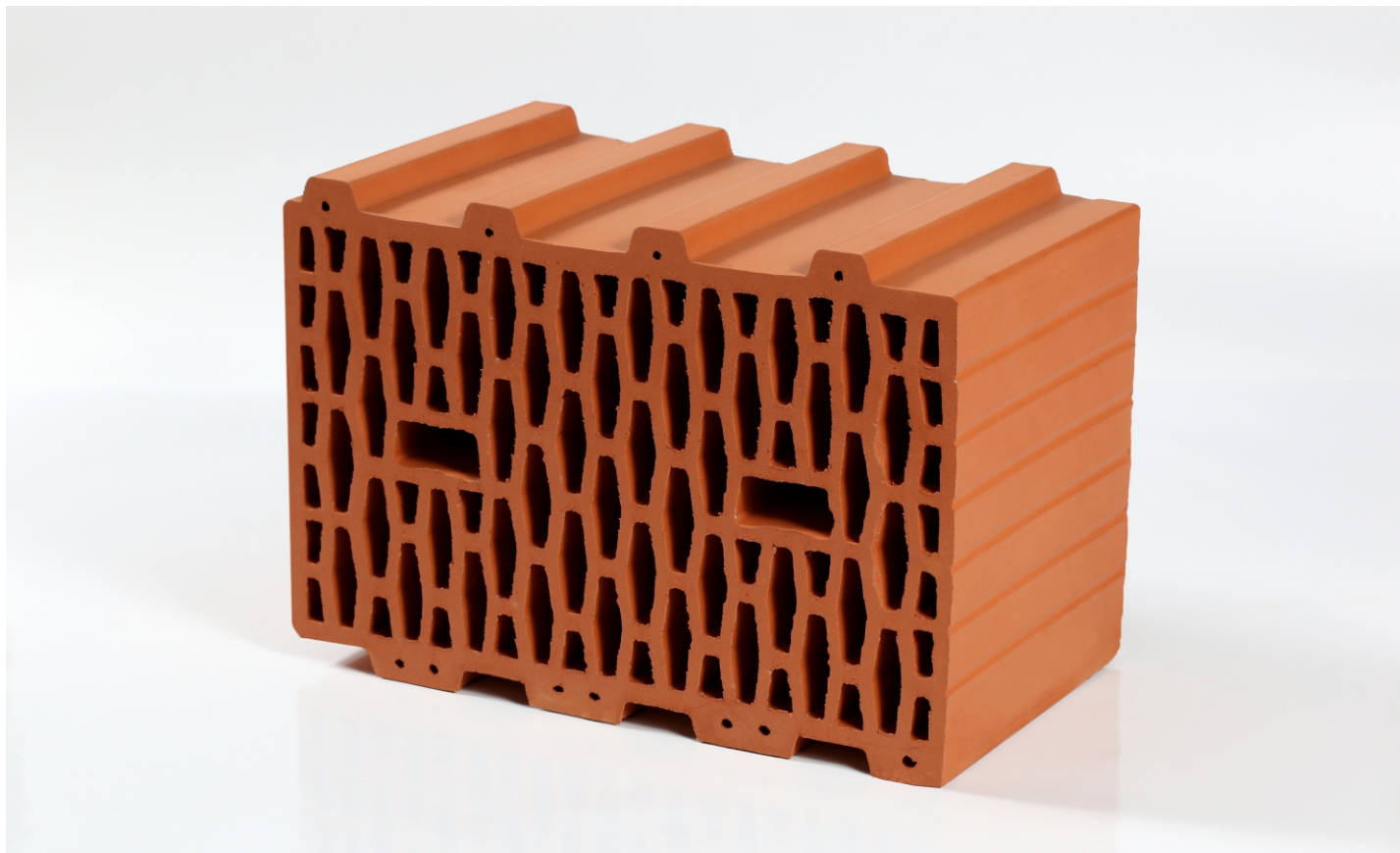
Technical data

DIMENSION (MM)	250x380x219
WEIGHT (KG)	18.1
DENSITY (KG/M3)	800-900
GRADE (M*)	75-175
VOIDAGE (%)	58%
FROST-RESISTANCE (CYCLE)	50
WATER ABSORPTION (%)	11.7
THERMAL CONDUCTIVITY W /(m ° C)	0.187





Large-format ceramic stone 10,7 NF-S



- Intended for constructing load-bearing and self-supporting walls of cottages and high-rise buildings. It is reasonable to use the block both in brick and monolithic construction instead of common ceramic brick or blocks of porous concrete.



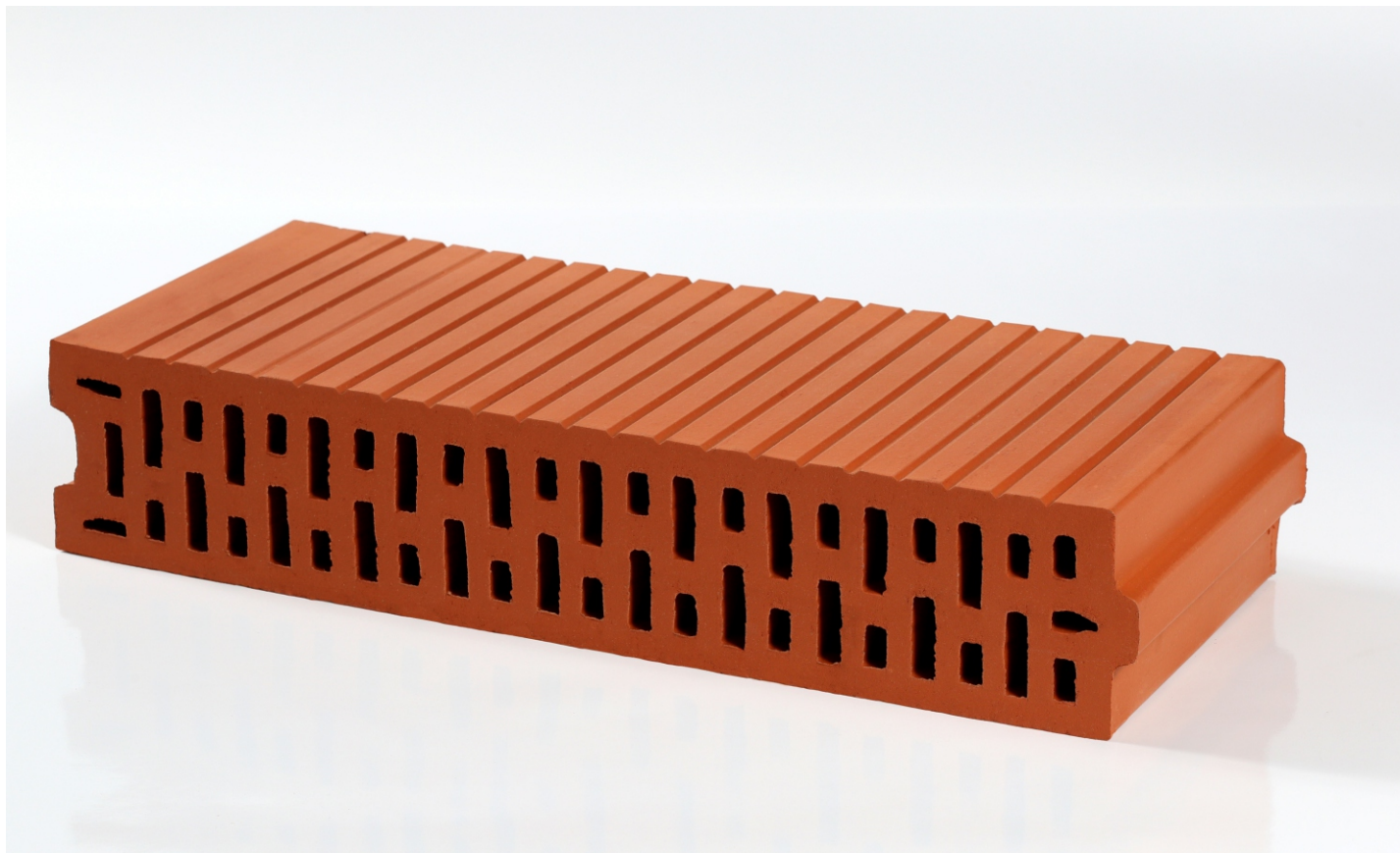
Technical data

DIMENSION (MM)	380x250x219
WEIGHT (KG)	18.1
DENSITY (KG/M3)	800-900
GRADE (M*)	75-175
VOIDAGE (%)	56%
FROST-RESISTANCE (CYCLE)	50
WATER ABSORPTION (%)	11.9
THERMAL CONDUCTIVITY W /(m ° C)	0.187





Large-format ceramic stone 5,73 NF for partition walls



- Intended for constructing interior partition walls of buildings.

Technical data

DIMENSION (MM)	510x100x219
WEIGHT (KG)	13
DENSITY (KG/M3)	1200-1300
GRADE (M*)	150-250
VOIDAGE (%)	41%
FROST-RESISTANCE (CYCLE)	50
WATER ABSORPTION (%)	8.2
THERMAL CONDUCTIVITY W /(m ° C)	0.201

